



Features

- Small Size Design EIA 1210 3.2×2.5×2.5mm
- Current Handling Capability 1,000A @ 8/20μ s
- Low Capacitance and Insertion Loss
- Fast Response and Long Service Life
- Reliable to Protect Electrostatic Surge
- Moisture sensitivity level: Level 1

Application information

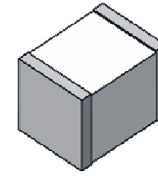
- Ethernet

Agency Approvals

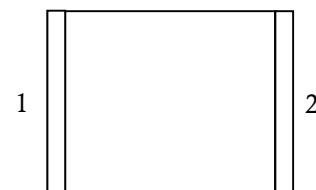
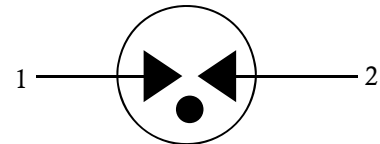
Icon	Description
RoHS	Compliance with 2011/65/EU
HF	Compliance with IEC61249-2-21:2003
	Mean lead free
	Compliance with UL497B, Certificated E232249

Electrical Parameter

DC Breakdown Voltage 1)2)	100V/s	360-580	V
		Typical values: 470	V
Impulse Spark-over Voltage	At 1kV/μs	for 99 % of measured values ≤ 950	V
	At 1kV/μs	Typical values of distribution ≤ 900	V
Impulse Discharge Voltage 3)	10/700μs	6,000	V
Impulse Discharge Current 3)	8/20μs	1,000	A
Arc Voltage	At 1A	~10	V
Insulation Resistance	DC=100V	≥1	GΩ
C(1MHz)	VDC=0.5V	≤0.5	pF
Weight		~0.094	g
Operating And Storage Temperature		-40-90	°C
Marking		Without	

Exterior


SMD

Package (Top View)

Schematic Symbol


1) At delivery AQL 0.65 level II GB/T 2828.1-2003

2) In ionized mode

3) Terms and waveforms in accordance with ITU-T Rec. K. 12; IEC 61643-21

Gas Discharge Tube

Version: A1 2016-04-11

Part Numbering System

BZ 401 M

(1) (2) (3)

(1) Bencent Gas Discharge Tube

(2) Series: DC Breakdown Voltage,

 e.g.: $401=40 \times 10^1=400V$

 (3) Tolerance of DC Breakdown Voltage, $M=+/-20\%$,
 $N=+/-30\%$, the Specific tolerance is decided by the table
 of "Electrical Parameter"

Product Characteristics

Lead Material	Copper
Body Material	Ceramics
Terminal Finish	100% Matte-Tin Plated

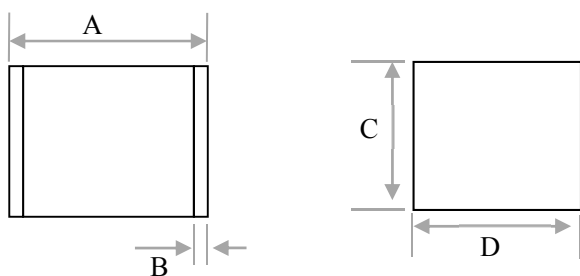
Environmental Reliability Characteristics

Testing items	Technical standards
High Temperature Storage Test	Temperature: 90°C Time: 2H
Low Temperature Storage Test	Temperature: -40°C Time: 2H
Vibration	Frequency: 10-500Hz Amplitude: 0.15mm Time: 45min
Resistance of soldering heat	Temperature: 260±5°C Time of dip soldering: 10s, 1time

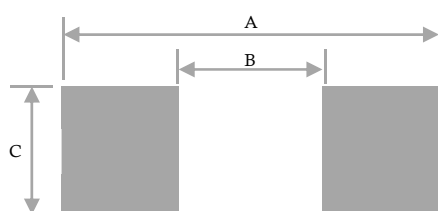
Note: Up-screen program can be specified by customer's request via contacting Bencent service

Solderability test

Solderability	Solder Pot Temperature:	245°C ± 5°C
	Solder Dwell Time:	4-6 seconds

Product Dimensions


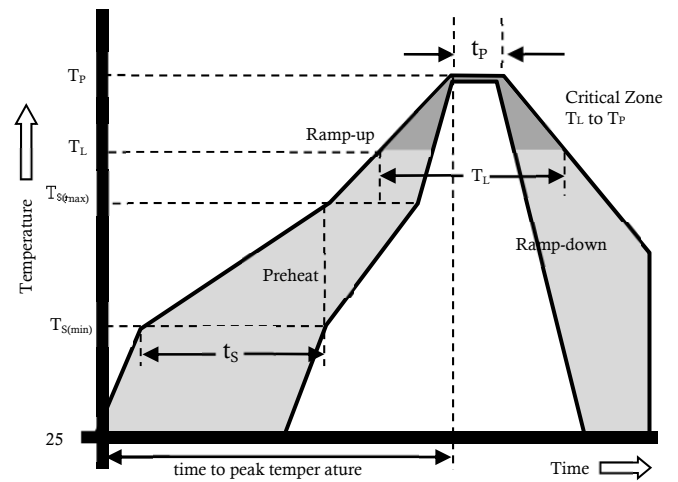
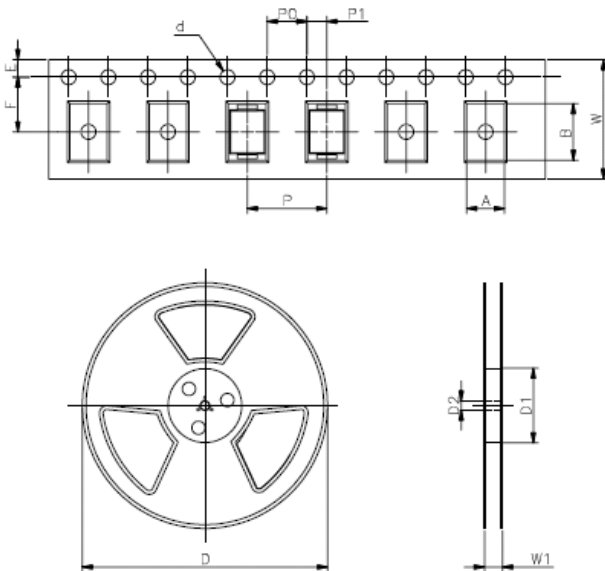
REF	mm	inch
A	3.2±0.3	0.126±0.013
B	0.3±0.2	0.013±0.008
C	2.5±0.2	0.098±0.008
D	2.5±0.2	0.098±0.008

Recommended Soldering Pad


REF	mm	inch
A	4.5	0.177
B	2.0	0.079
C	2.8	0.110

Reflow Profile

Reflow Condition		Pb-Free assembly
Pre Heat	Temperature Min	150°C
	Temperature Max	200°C
	Time (min to max)	60 – 180 secs
Average ramp up rate (Liquids) Tmp (T _L) to peak		3°C/second max
T _S (max) to T _L - Ramp-up Rate		3°C/second max
Reflow	- Temperature (T _L) (Liquids)	217°C
	- Temperature (T _L)	60 – 150 seconds
Peak Temperature (T _P)		260±0/-5 °C
Time within 5°C of actual peak Temperature (t _p)		~10 seconds
Ramp-down Rate		6°C/second max
Time 25°C to peak Temperature (T _P)		8 minutes Max.
Do not exceed		260°C


Package Reel Information


REF	mm	inch
A	2.8±0.1	0.110±0.004
B	3.5±0.1	0.138±0.004
d	Φ 1.5±0.1	Φ 0.059±0.004
P0	4.0±0.1	0.157±0.004
P1	2.0±0.1	0.079±0.004
P	8.0±0.1	0.315±0.004
E	1.75±0.1	0.069±0.004
F	5.5±0.1	0.217±0.004
W	12.0±0.2	0.472±0.008
D	Φ 330.0	Φ 13.0
D1	Φ 50Min	Φ 1.97Min
D2	Φ 13±0.15	0.512±0.006
W1	16.8±2.0	0.661±0.079

Outline	Reel (PCS)	Per Carton (PCS)	Reel Diameter (mm)	Carton Size(mm)		
				L	W	H
TAPING	2,000	32,000	330	360	360	380